

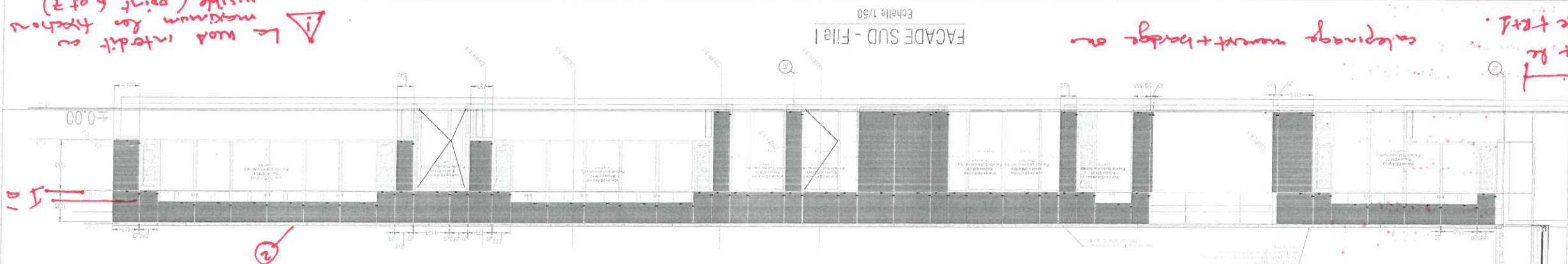
- 1 - partie faite à recevoir
- 2 - 4t conversion à faire
- 3 et 4 - Detail à discuter
- 5 - Calage de la réunion.
- 6 - Detail à recevoir
- 7 - idem 6.

⑤.  $\frac{1}{2}$

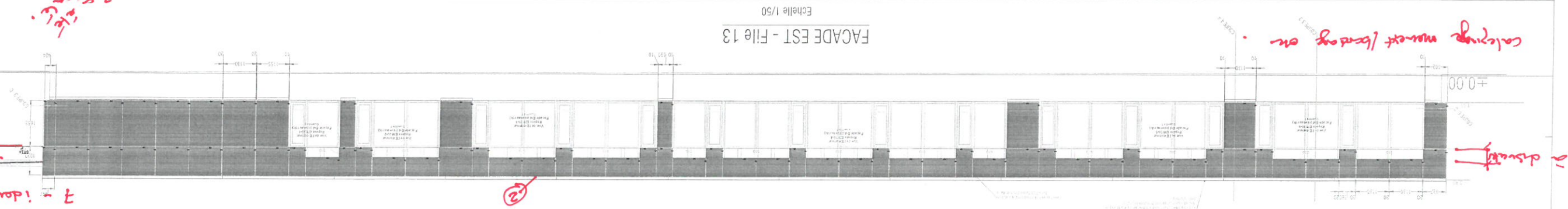
!  $\hookrightarrow$  local inflection  
maximum for hypothesis  
visible (point 6 at 7)

margin be  
rate + 1st.

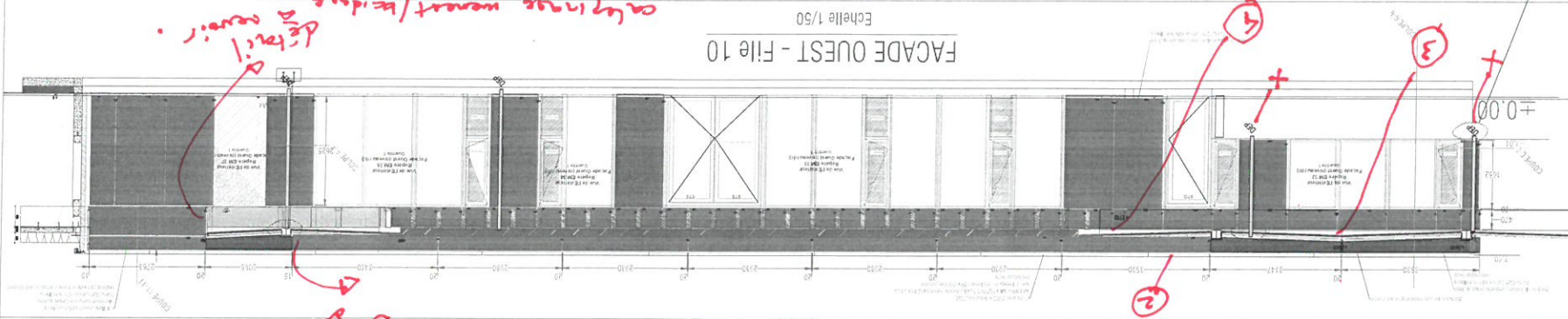
calculus want + badge on



⑤ red cut

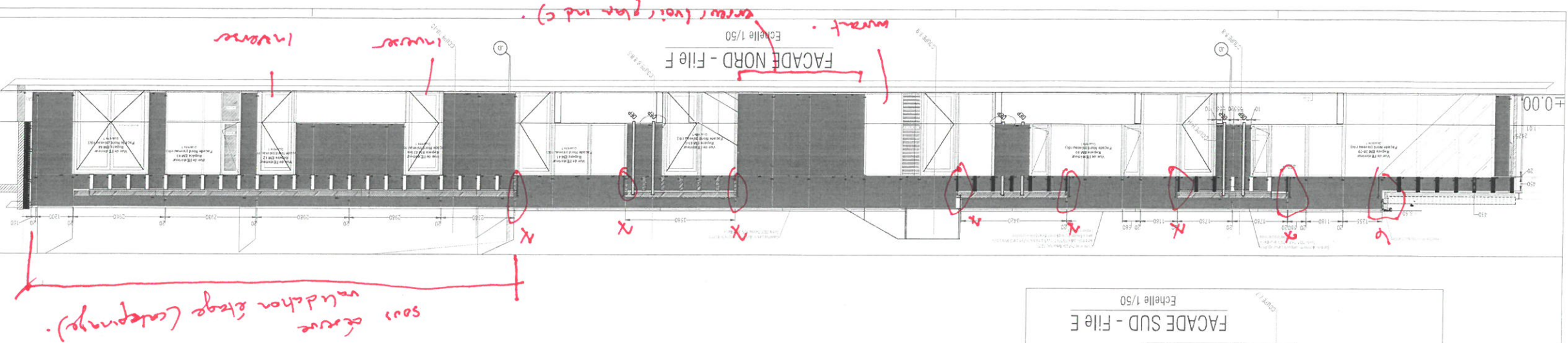
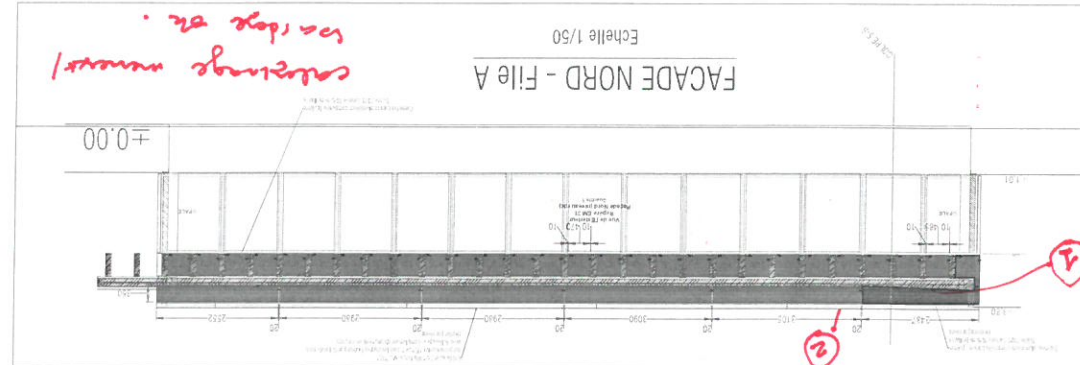
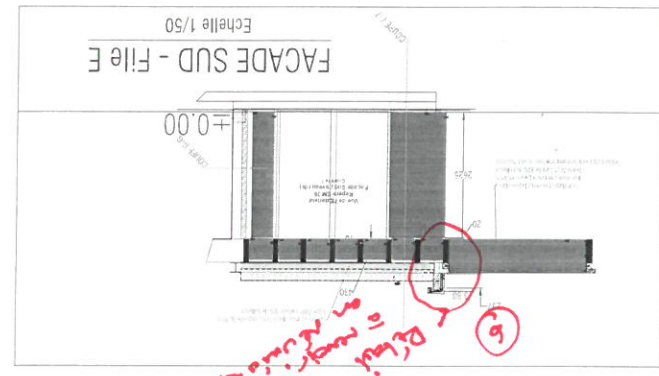


3. 2. 2. 2. 2.

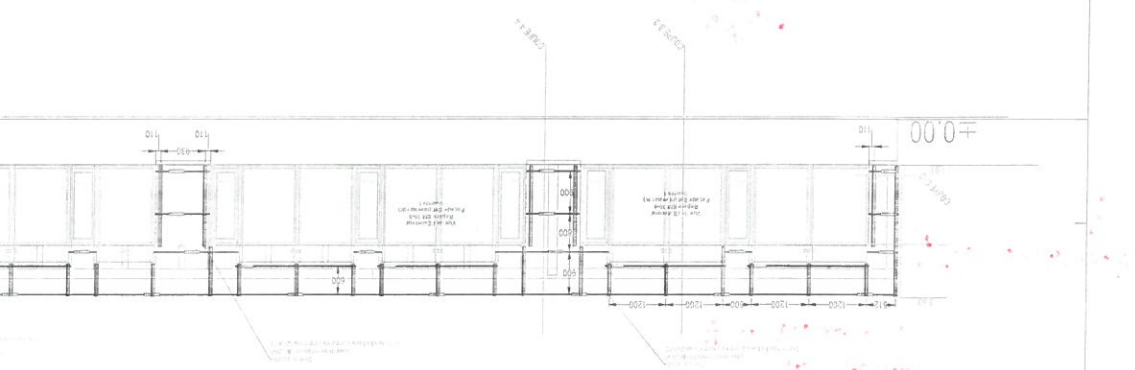
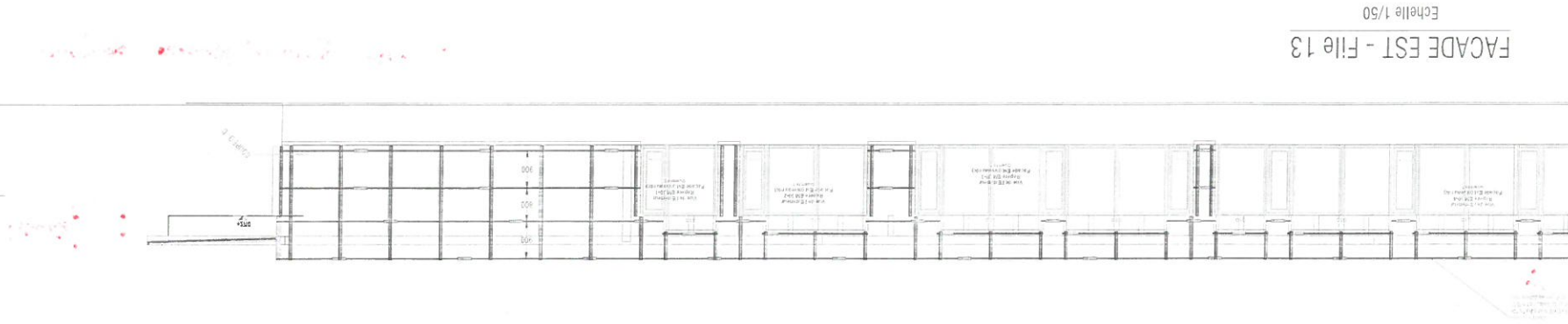


calving <sup>one</sup> interval / breeding <sup>one</sup> interval.

ATTENTION AUX POSITIONS DES DEP DANS BARDAGE

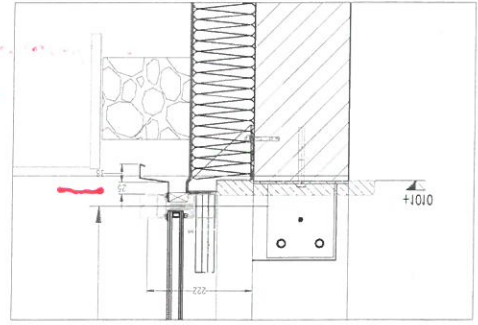
[illegible]



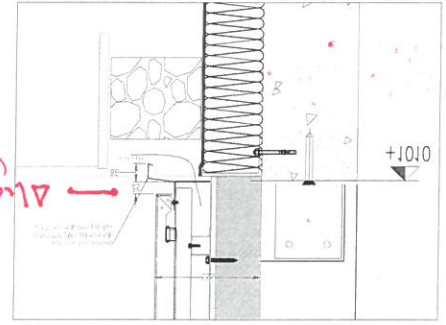


1. Lisse  
 visible entre  
 2 points  
 du cobalt  
 forme noir.  
 4. distances favorables :  
 - soit thermolyse  
 - soit un plat noir  
 - ou tout autre possible.  
 de platine.

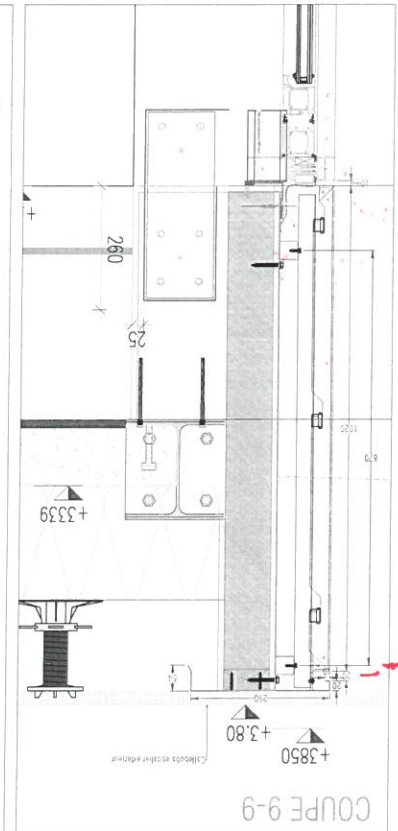


Détails sur la  
correspondance des  
bavettes sur talus

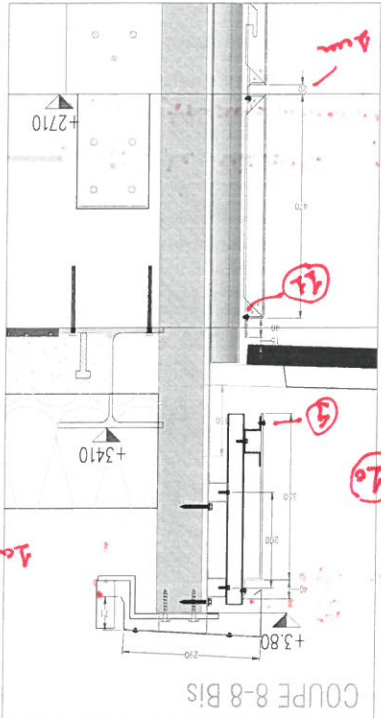
COUPE 5-5



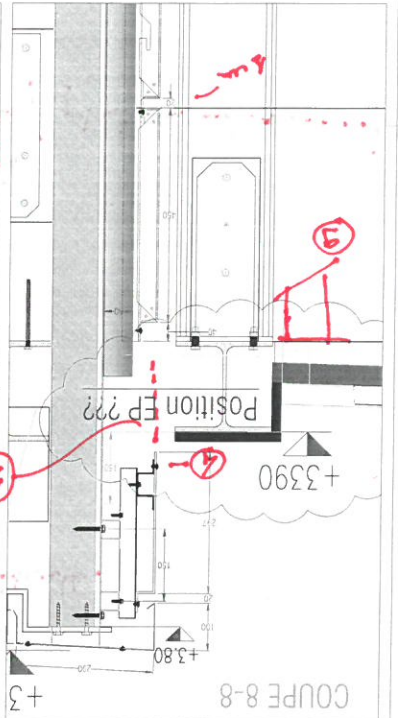
COUPE 4-4



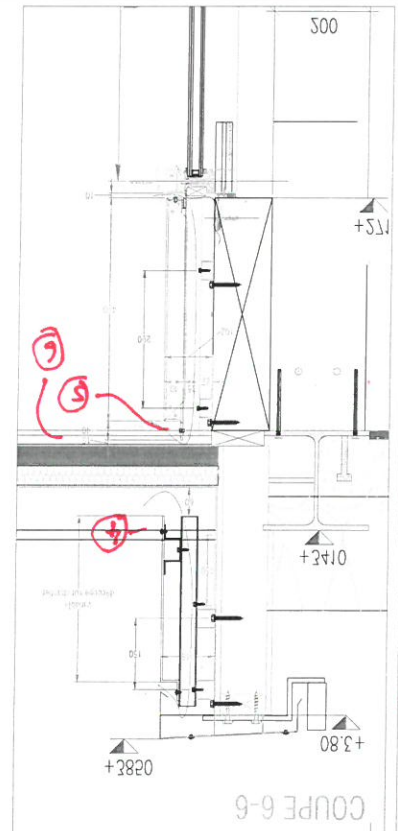
COUPE 9-9



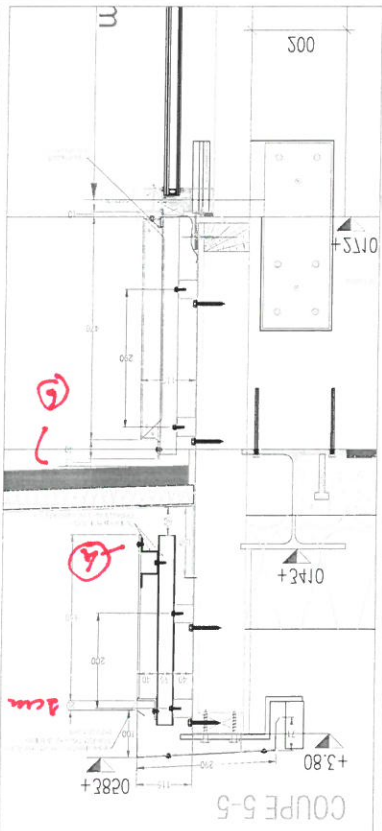
COUPE 8-8 BIS



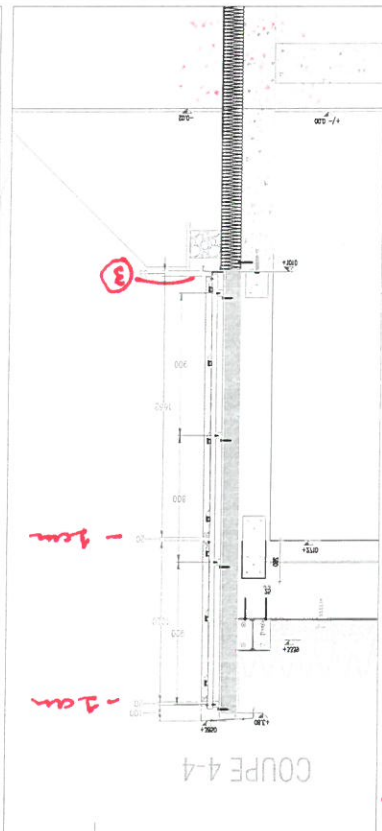
COUPE 8-8



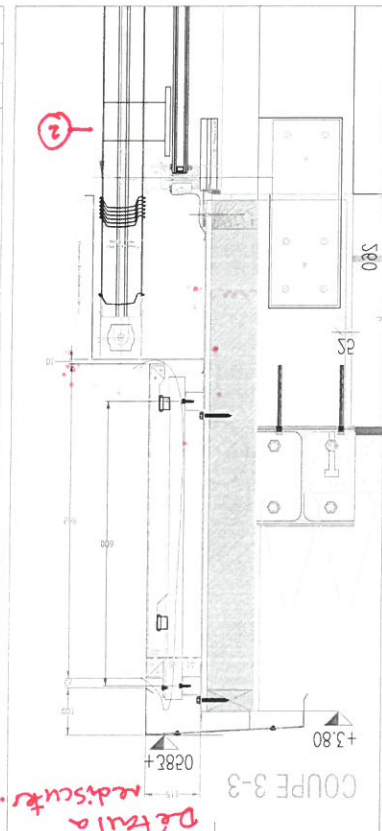
COUPE 6-6



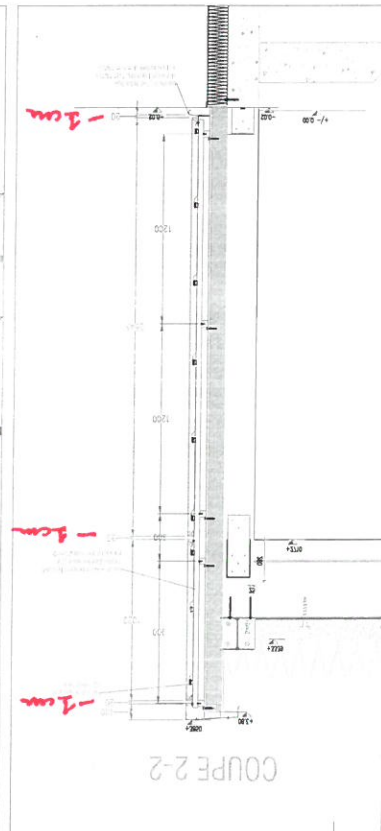
COUPE 5-5



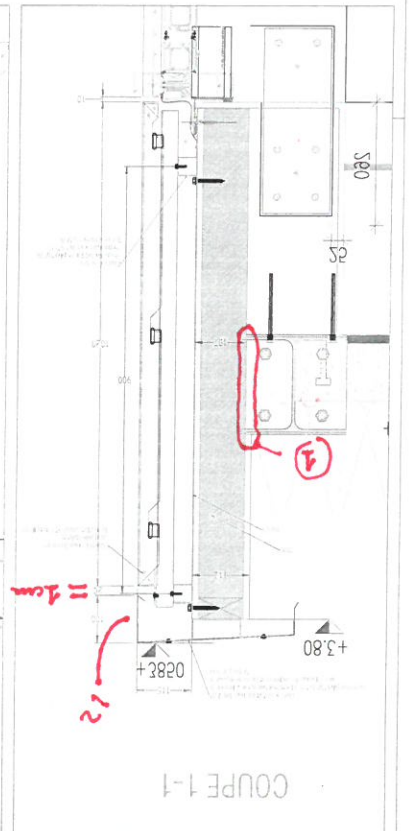
COUPE 4-4



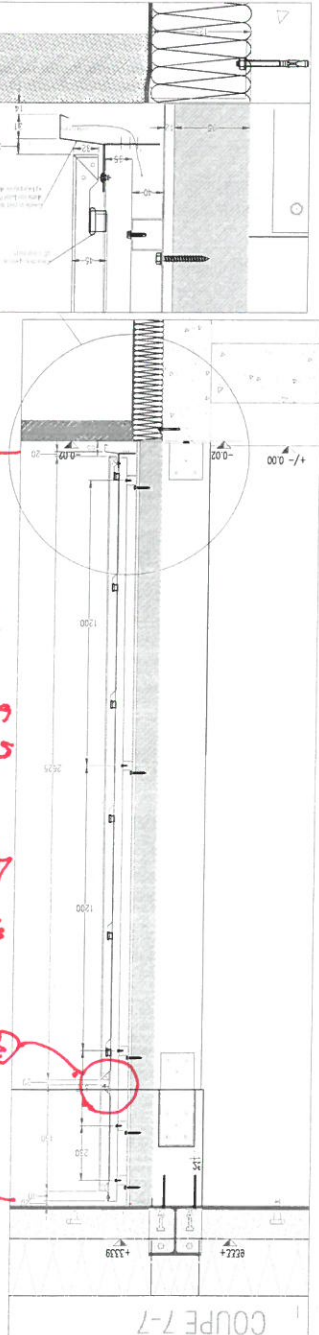
COUPE 3-3



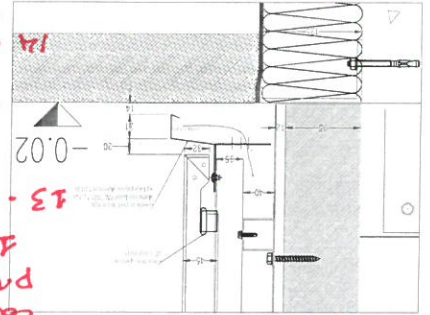
COUPE 2-2



COUPE 1-1



COUPE 7-7



**T**heir average cost was \$700, says the study's author, Dr. William Hargrett-Nelson.

1 - Detail  
encasté  
HEA 2  
- voir.

2 - B50 - équerre.  
fonctionnel.

3 - B50 - moins  
épais.

4 - Detail 3-3 a  
discuter.

5 - Dimension de  
joint.

6 - fixation visible  
dans le portail  
différent.

7 - vis noir.  
6 - vide de 25 mm  
à l'encastrement  
sous cdt.

8 - Dimension de  
joint.

9 - vis apparent  
Proposer solution  
alternative.

10 - CP de base  
20 - Laiting  
11 - vis de ca  
12 - Lf  
couverture -  
prototypes  
doux ; ;  
13 - Detail  
à recevoir  
sans  
détails.  
14 - Con de  
vis app.

100	DATE	15/01/13	1 - non notifié	
101	DESCRIPTION	Direction des Services Techniques et de l'Aménagement Urbain Plan de la Région 37541 Saint-Cyr-sur-Loire 12 rue de la Poste 41000 Blois Techniques Associées 1000 Blois 000010		
102	DESSIN	100010 02/10/15 1 - non notifié 37541 Saint-Cyr-sur-Loire		
103	REDA	100010 02/10/15 1 - non notifié 37541 Saint-Cyr-sur-Loire		
104	CONTRÔLE	100010 02/10/15 1 - non notifié 37541 Saint-Cyr-sur-Loire		



